

Commercial in Coín

Reference: R2322323



Bedrooms: 6

Bathrooms: 2

M<sup>2</sup> Build size: 893

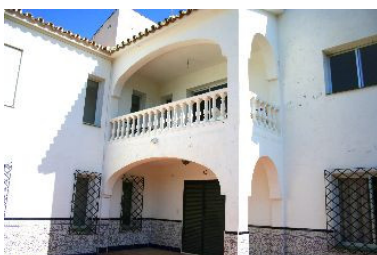
Price: 1,900,000 €

Status: Sale

Property Type: Commercial

Parking places: by request

M<sup>2</sup> Plot Size: 75,000



Overview: EQUESTRIAN Centre . Loads of POTENTIAL . Excellent communication links . Close to the popular town of Coin . Close to many TAPAS Bars . Walking distance to local bar-restaurant . EXPERIENCE THE CULTURE AND LIFESTYLE of the Guadalhorce Valley Exclusive equestrian property with excellent communication links. Located only a few minutes from the centre of Coin and 30 minutes from Malaga and Marbella. The plot of 70,000m<sup>2</sup> is fully fenced, the house has its own well and water deposit. Picadero 600m<sup>2</sup> warehouse Large house of 300m<sup>2</sup> Workshop 300m<sup>2</sup> Stabling for 10 horses The house does require renovating but it would make a perfect equestrian centre or rural hotel. 30 minutes drive to Marbella 35 minutes to Malaga Airport

---

#### Features:

Mountain views, Private garden, Parking, Resale