

Penthouse in Puerto Banús

Reference: R2452496

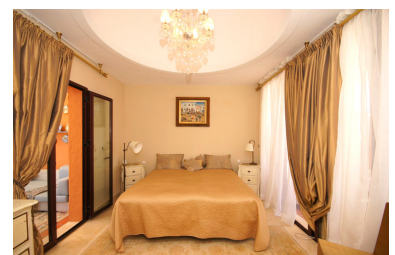


Bedrooms: 3
Status: Sale

Bathrooms: 3
Property Type: Penthouse

M² Build size: 206
Parking places: by request

Price: 1,150,000 €
M² Plot Size:



Overview:Apartment: •Penthouse Orientation: •South Condition: •Excellent Pool: •Communal •Indoor •Room For Pool Climate Control: •Hot A/C •Cold A/C Views: •Sea •Mountain •Panoramic •Garden •Pool Features: •Covered Terrace •Lift •Fitted Wardrobes •Near Transport •Private Terrace •Satellite TV •ADSL •Gym •Sauna •Storage Room •Ensuite Bathroom •Disabled Access •Jacuzzi •Barbeque •Double Glazing Furniture: •Fully Furnished Kitchen: •Fully Fitted Garden: •Communal •Landscaped Security: •Gated Complex •Electric Blinds •Entry Phone •Alarm System •24 Hour Security •Safe Parking: •Garage •Private Utilities: •Electricity •Drinkable Water Category: •Luxury Setting: •Close To Port •Close To Shops •Close To Schools •Urbanisation

Features:

Pool, Heating, Sea views, Mountain views, Private garden, Lift, None, Alarm system, 24H Security, Parking, None