

Penthouse in Elviria

Reference: R2541257



Bedrooms: 2

Bathrooms: 2

M² Build size: 112

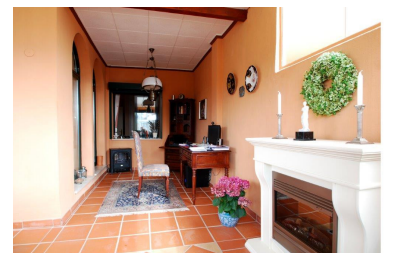
Price: 245,000 €

Status: Sale

Property Type: Penthouse

Parking places: by request

M² Plot Size:



Overview:Excellent penthouse duplex set within a gated community with private mature gardens well maintained and with great views overlooking the golf, the La Concha mountains and the pool. Located next to the Santa Maria golf course and restaurant this exclusive development is surrounded by pure nature and offers proximity to the best beaches of Marbella (5min) and other amenities. The property stands out for its elegant interior, living room with dining area extended by glazed terrace (35m2), fireplace, master bed room with bath en suite , guest bed room with bath. 3rd bedroom possible. The center of loife is the ample SE facing terrace with coverd dining area and colorful plants. Excellent quality features, A/A warm/cold, UF lounge and in the bath rooms, garage space and storage. Well sized communal pools. Walking distance to Santa Maria golf club . Demanded area. Ideal LT residence.

Features:

Pool, Air conditioning, Heating, Sea views, Mountain views, Private garden, Lift, None, Holiday Home, Resale