

Land in El Rosario

Reference: R3501808

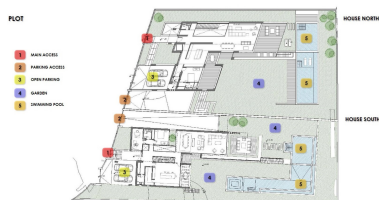


Bedrooms: by request
Status: Sale

Bathrooms: by request
Property Type: Land

M² Build size:
Parking places: by request

Price: 1,300,000 €
M² Plot Size: 2,400



Overview:SEA VIEW DEVELOPMENT OPPORTUNITY! Two adjoining development plots of 1200m2 each with panoramic sea views. Full project included with architects plans and planning permission approved to build two contemporary sea view villas (estimated resale value of €2.9M each based upon high spec finish). A prime site for development of 2 new sea view villas in El Rosario.

Features:

None, Sea views, Investment