

Terraced Townhouse in Benalmadena Costa

Reference: R3880948



Bedrooms: 4

Bathrooms: 2

M² Build size: 205

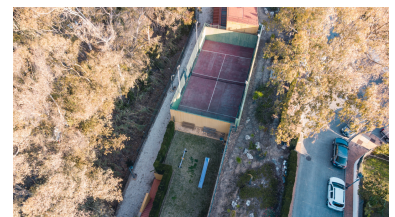
Price: 325,000 €

Status: Sale

Property Type: Terraced
Townhouse

Parking places: by request

M² Plot Size:



Overview: Townhouse located in Torremuelle and less than 5 minutes walking to the beach distributed over 3 floors as follows: Ground floor: Living room with access to the backyard, independent kitchen and 1 toilet. First floor: 3 bedrooms with fitted wardrobes and 2 bathrooms (1 en suite). Top floor: Large bedroom # 4. Very spacious underground garage space for 2 cars. Air con throughout except 1 bedroom Very well maintained community with paddle tennis court, pool and gardens. Plot 116,56m². Built size 205,01m². Basement 53,69m². Year of construction 2002.

Features:

Pool, None, Private garden, Parking