

Terraced Townhouse in Nueva Andalucía

Reference: R3938536



Bedrooms: 2

Bathrooms: 2

M<sup>2</sup> Build size: 93

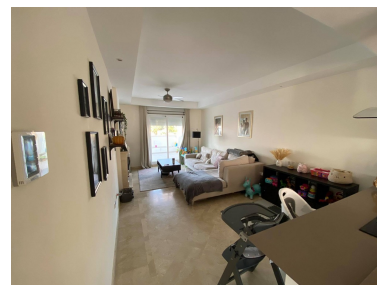
Price: 325,000 €

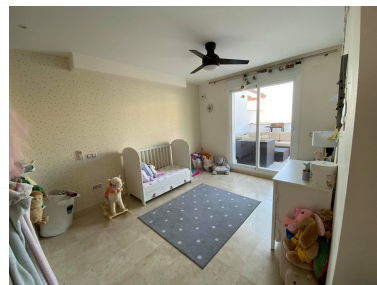
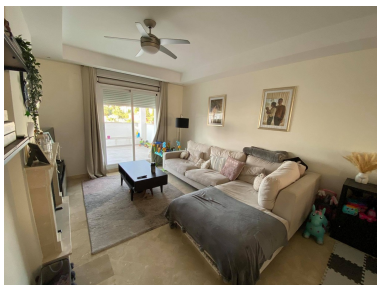
Status: Sale

Property Type: Terraced  
Townhouse

Parking places: by request

M<sup>2</sup> Plot Size:





---

Overview: A Fantastic corner townhouse located in the well kept Urbanization of Aloha Royal with plenty of natural light all day! The property consists of 3 levels, the first with one en-suite bedroom, kitchen, living room, utility room and terrace, the second floor has the master bedroom with en-suite bathroom and private terrace. The 3rd level is a large solarium with open panoramic views of the mountains and partial sea views. Included in the price is a storage room and parking space in a closed garage. The owner has renovated the kitchen entirely to a really high standard, making the property feels even bigger and brighter. The urbanisation is very well looked after and has 2 communal pools and children's play area. As the property is located in Nueva Andalucía there are plenty of amenities close by including schools, restaurants, shops and Marbella / Puerto Banus are only a short drive away. We have keys in the office for easy viewings!

---

Features:

Pool, Air conditioning, Sea views, Mountain views, None, Private garden, Parking