

Apartment in Puerto Banús

Reference: R3958921

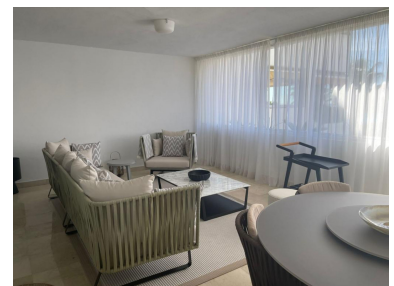
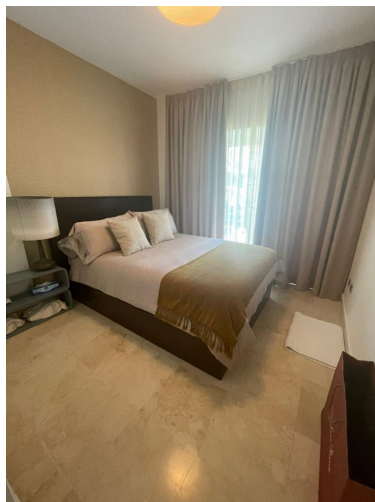
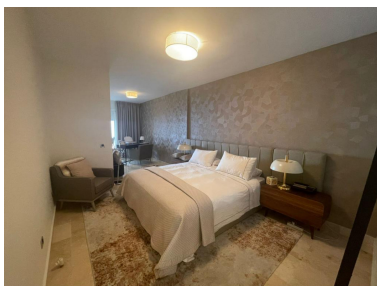


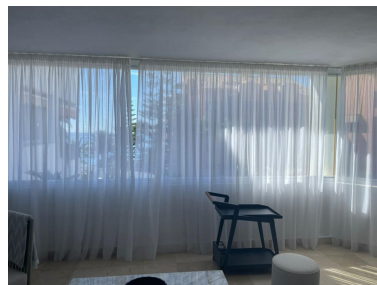
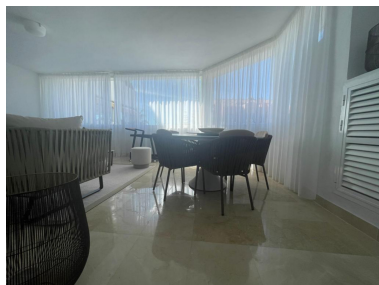
Bedrooms: 3
Status: Sale

Bathrooms: 2
Property Type: Apartment

M² Build size: 140
Parking places: by request

Price: 875,000 €
M² Plot Size:





Overview: Apartment facing the sea, located a few minutes walk from Puerto Banús. Adjacent to the Guadalpin Banús hotel. The apartment has two bedrooms and two bathrooms plus a room that continues to the main bedroom, used as an office. Completely renovated with top quality materials and designer furniture. Sold with parking space.

Features:

Beachfront, None, Pool, Air conditioning, Sea views, Lift, None, Private garden, Parking, Holiday Home