

Villa in Elviria

Reference: R3975055

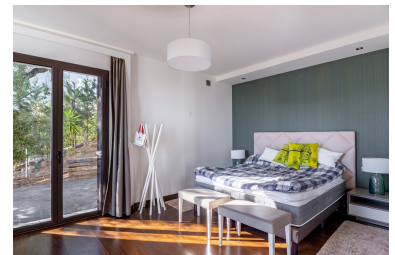


Bedrooms: 6  
Status: Sale

Bathrooms: 6  
Property Type: Villa

M<sup>2</sup> Build size: 730  
Parking places: by request

Price: 1,860,000 €  
M<sup>2</sup> Plot Size: 2,060



Overview:ELVIRIA - FANTASTIC SOUTH EAST ORIENTATED VILLA ON A PLOT OF 2060 M2. THIS PROPERTY FEATURES 6 BEDROOMS AND 6 BATHROOMS PLUS 2 GUEST TOILETS, WITH A TOTAL OF 730 M2 BUILT, 48 M2 COVERED PORCH AND 78 M2 TERRACES AROUND THE POOL. THIS PROPERTY IS EVERYTHING ONE COULD DREAM OF, FROM ITS STYLE TO ITS PRIVACY, LUXURY AND CHARM. DUE TO ITS LARGE WINDOWS YOU CAN ENJOY THE VIEWS TO THE MOUNTAINS AND THE SEA. THE VILLA IS IDEAL FOR THOSE LOOKING FOR A NEW HOME OR SIMPLY A SPACE TO SPEND THEIR HOLIDAY. UNDERFLOOR HEATING ON THE MAINFLOOR AND GUEST APARTMENT. A/C IN ALL BEDROOMS. DAIKIN HEAT AND COOLING SYSTEM. CENTRAL VACUUM CLEANING SYSTEM. ALARM SYSTEM. AT THE MAIN FLOOR - YOU CAN FIND THE ENTRANCE HALL, A GUEST TOILET AND A SPACIOUS LIVING-ROOM WITH LARGE SLIDING WINDOWS AND HIGH CEILING, ACCESS TO THE TERRACES AND TO THE LARGE POOL OF 8 X 12. LARGE FIREPLACE AND BAR. DINING ROOM. LARGE FULLY EQUIPPED KITCHEN WITH BREAKFAST AREA AND CONNECTING DOOR TO LAUNDRY ROOM. ON THE SAME FLOOR YOU CAN FIND A SEPARATE LIVING AREA WITH A MASTER BEDROOM, DRESSING ROOM, EN-SUITE BEDROOM WITH SHOWER AND JACUZZI. PRIVATE TERRACE. TWO FURTHER EN-SUITE BEDROOMS AT THE OTHER END OF THIS FLOOR PLUS TERRACE AND ACCESS TO POOL AREA. GARDEN WITH FRUIT TREES FROM THE ENTRANCE HALL A STAIRCASE GOES DOWN TO A MEZZANINE WITH AN EN-SUITE BEDROOM FOR STAFF OR CINEMA. COVERED TERRACE WITH SPACE FOR DINING 12, RELAX SOFAS AND BARBECUE. ACCESS TO A PORCH WITH A FOUNTAIN ON THE BACKSIDE OF THE HOUSE AND ACCESS TO THE ENTRANCE DOOR TO THE GUEST APARTMENT DOWNSTAIRS. AT THE BASEMENT WE CAN FIND A GARAGE FOR 4 CARS. GYM WITH 2 WINDOWS TO THE POOL BELOW THE WATER. SHOWER AND GUEST TOILET. LARGE STOREROOM WHICH COULD BE PARTLY CONVERTED INTO A SAUNA. INDEPENDENT APARTMENT - WHICH CONSISTS OF TWO EN-SUITE BEDROOMS, A SMALL LIVING ROOM, FULLY EQUIPPED KITCHEN, TERRACE AND GARDEN ACCESS TO THE POOL AREA. AT THE MACHINERY ROOM YOU WILL FIND THE POOLPUMP, IRRIGATION SYSTEM AND WATER HEATER SYSTEMS. AT THE ROOF TERRACE YOU CAN FIND A LOUNGE AREA WITH PANORAMIC VIEW TO THE COAST AND MOUNTAINS. PRE-INSTALLATION FOR A BUBBLE POOL. PRE-INSTALLATION FOR DOMOTIC SYSTEM FURNITURE - OPTIONAL

---

Features:

Pool, Air conditioning, Sea views, None, Private garden, Parking, Resale