

Apartment in Puerto Banús

Reference: R4625932



Bedrooms: 2

Bathrooms: 1

M² Build size: 95

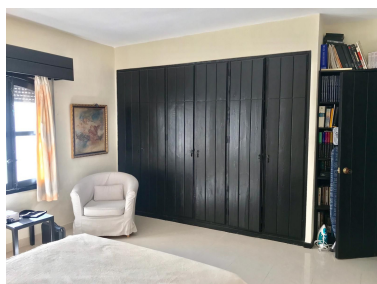
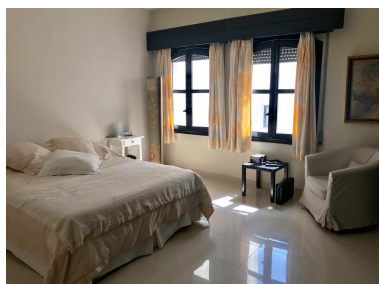
Price: 595,000 €

Status: Sale

Property Type: Apartment

Parking places: by request

M² Plot Size:



Overview: Lovely light and airy 1-2 bedroom apartment in Puerto Banus Has 95 m2 distributed in a large open living room with built in fireplace, separate area for dining with views north looking over the Palm tree avenue of Julia Iglesia. From the dining area access to a fully fitted Kitchen. Includes large bedroom with built in wardrobes and lots of morning sun entering from 2 arched wooden windows with metal blinds. Bathroom double marble sinks, shower and bath and separate WC A/Con- hot and cold The original terrace access from the living room facing south has been enclosed with window and double doors both in solid pine wood. This room has been used as a 2nd bedroom, office and gym or extra cloakroom over the years The apartment has lots of light is a third floor apartment with lift from the basement/parking. The block has wrought iron gates and is private and at night time the exterior gates are closed by the night watchman so maximum security. Small storage space in the passage near to the entrance of the apartment Access from the basement/parking directly into the port and marina, beach 60 mts. Excellent rental property or for all year living.

Features:

Beachfront, Air conditioning, Heating, Lift, None, Parking, Holiday Home, Investment, Resale