

Land in Sotogrande

Reference: R4682359

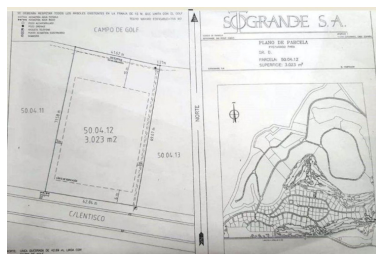
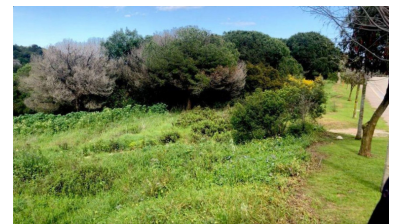
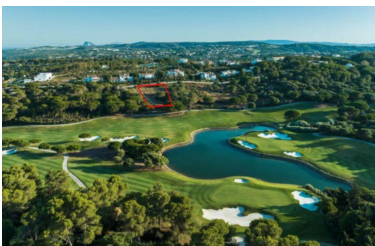


Bedrooms: by request
Status: Sale

Bathrooms: by request
Property Type: Land

M² Build size:
Parking places: by request

Price: 690,000 €
M² Plot Size: 3,023



Overview:Residential Plot, Sotogrande, Costa del Sol. Garden/Plot 3023 m². Setting : Frontline Golf, Close To Golf, Close To Schools, Urbanisation. Orientation : South West. Condition : Excellent. Pool : Room For Pool. Views : Golf. Security : Gated Complex, 24 Hour Security. Category : Golf, Resale, With Planning Permission.

Features:

Pool, 24H Security, Resale