

+34 604 489 646

info@luxury-realty.com

Apartment in Puerto Banús

Reference: R4831390

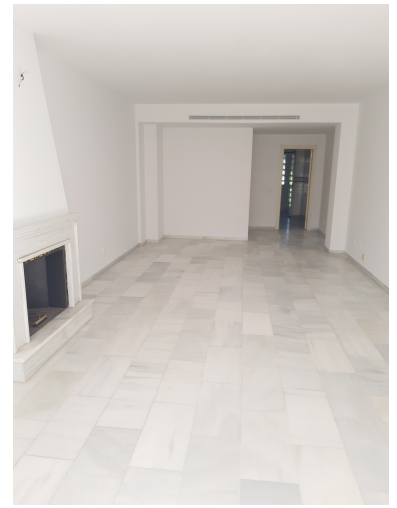


Bedrooms: 2
Status: Sale

Bathrooms: 2
Property Type: Apartment

M² Build size: 109
Parking places: by request

Price: 530,000 €
M² Plot Size:



Overview:"Bright beachside corner apartment located in one of the most prestigious and established residential developments of Puerto Banus.With a wonderful south facing terrace, views of the gardens and direct access to the community pool. One of the most attractive features of this luxurious urbanization is its unbeatable location. A short walk (300 meters) from the sandy beaches and the promenade that connects Marbella with Puerto Banús.The urbanization is a 10 minute walk from the center of Puerto Banús with its variety of luxury boutiques, El Corte Ingles, gourmet restaurants, cinemas and a nightlife for all tastes. EXCELLENT INVESTMENT!"

Features:

None, Pool, Air conditioning, Private garden, Lift, Parking, Investment