

Penthouse in Benalmadena Pueblo

Reference: R4838542



Bedrooms: 4

Bathrooms: 3

M² Build size: 215

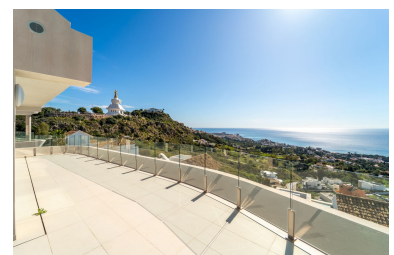
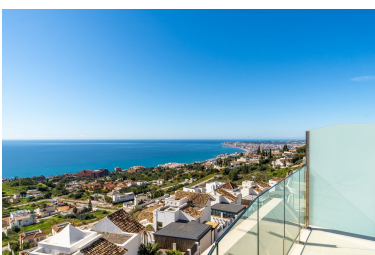
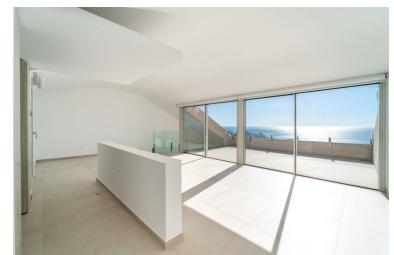
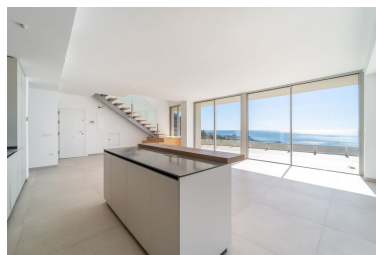
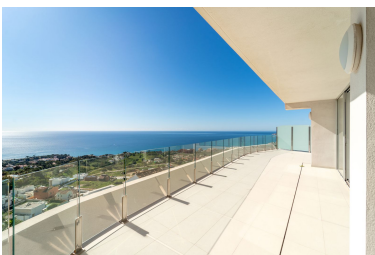
Price: 1,289,000 €

Status: Sale

Property Type: Penthouse

Parking places: by request

M² Plot Size:



Overview: Brand new south facing penthouse duplex, located in the exclusive urbanization of Stupa Hills. The property consists of hall, 3 bedrooms with built-in wardrobes and electric blinds, bathroom and guest toilet, open plan kitchen fully furnished and equipped with electrical appliances from Siemens. Spacious living-dining room that leads out to a terrace of 65m² with panoramic sea views, the Fuengirola Bay and of the Buddhist Temple. On the top floor is located the main bedroom with walk-in closet, ensuite bathroom and laundry area. The bedroom leads out to a terrace of 21m² with panoramic sea views. Air conditioning hot and cold with Airzone, video intercom, domotic system, pre-installation alarm system. Includes two parking spaces and one storage room.

Features:

New development, Air conditioning, Sea views, Lift, None, Private garden, Parking, Resale