

## Terraced Townhouse in Elviria

Reference: R4862419



Bedrooms: 2

Bathrooms: 2

M<sup>2</sup> Build size: 83

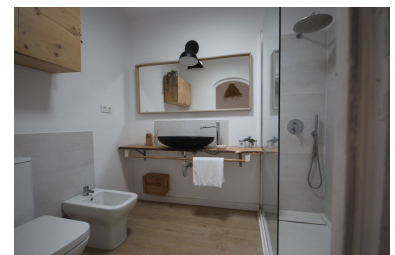
Price: 345,000 €

Status: Sale

Property Type: Terraced  
Townhouse

Parking places: by request

M<sup>2</sup> Plot Size:



---

Overview: FANTASTIC PROPERTY LOCATED IN THE LOWER PART OF ELVIRIA, MARBELLA 5 MINUTES FROM ALL SERVICES OF INTEREST, RESTAURANTS, POST OFFICE, SUPERMARKETS, BUS, ETC. CHARMING TOWNHOUSE ON TWO FLOORS, CONSISTING OF TWO BEDROOMS, TWO BATHROOMS, KITCHEN, LIVING ROOM WITH ACCESS TO A BEAUTIFUL TERRACE. FULLY FURNISHED AND DECORATED, IT IS DELIVERED READY TO MOVE INTO COMMUNITY AREAS: COMMUNITY POOL, PADEL COURT, MINI FOOTBALL, IT IS LOCATED IN AN AREA SURROUNDED BY GARDENS AND TREES.

---

Features: