

Land in Manilva

Reference: R4870753



Bedrooms: by request

Bathrooms: 1

M² Build size: 212

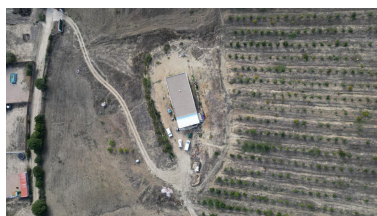
Price: 950,000 €

Status: Sale

Property Type: Land

Parking places: by request

M² Plot Size: 100,565



Overview: Non-developable rural land of 10 hectares, of which 212 sqm are built in a legalized warehouse, with the option of housing. With very good access, 3 minutes from the road that crosses "EL SECADERO" and "SAN MARTIN DEL TESORILLO". It has a plantation of 500 avocado trees, capable of producing 5000 Kgs of fruit in each harvest and also 30 Grape Vines. It has fully legalized water, electricity and sewage. The water installation has a pressure group and tanks for irrigation and drinking water.

Features:

Mountain views