

Commercial in Coín

Reference: R4891033



Bedrooms: by request
Status: Sale

Bathrooms: by request

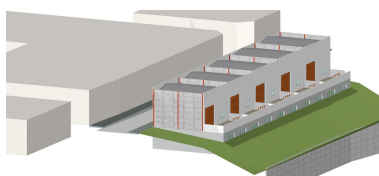
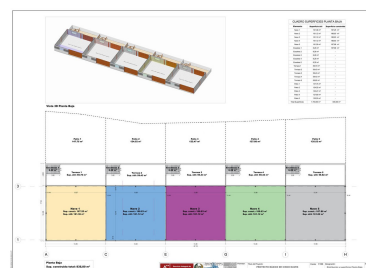
M² Build size: 400

Price: 315,000 €

Property Type: Commercial

Parking places: by request

M² Plot Size:



Overview: Unique opportunity in La Trocha Industrial Estate, Coín! New construction industrial warehouse for sale with 400 m² built. The warehouse has two spacious and functional rooms, a first floor with 167m and a basement of 233m, ideal for various industrial or logistical activities. Its strategic location at street level in one of the most sought-after industrial estates in the area. Ensures excellent visibility and accessibility. Don't miss this opportunity and contact us for more information!

Features:

New development, Mountain views, Investment