

Apartment in Puerto Banús

Reference: R4929040

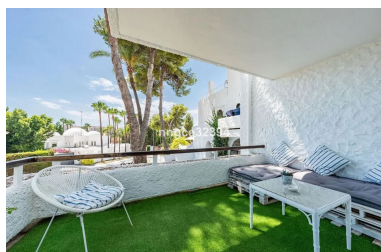
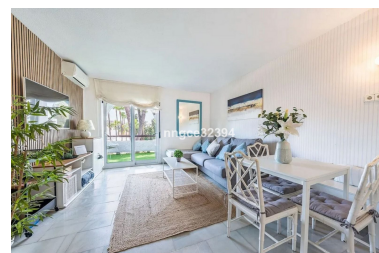
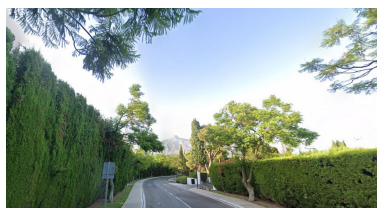
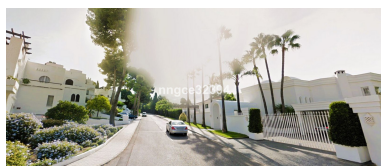


Bedrooms: 1
Status: Sale

Bathrooms: 1
Property Type: Apartment

M² Build size: 70
Parking places: by request

Price: 319,900 €
M² Plot Size:



Overview: Also look at R4994794 similar but New Reformed & new furniture, + solarium to ad bedroom and bathroom tourist license, communal approved- turn-key rental income. Nestled in the master community of Atalaya de Rio Verde, surrounded by lavish mansions is where you will find this little gem of potential, where neighboring units are selling up to 1.2 million. Just 1 kilometer from the iconic Puerto Banús, this two-level duplex apartment offers an incredible opportunity to create your dream home or make a high-return investment in a charming Andalusian-style community. With bright, spacious interiors, two terraces, and serene garden views, this property promises the perfect combination of peace and convenience. The potential here is limitless. The apartment is currently a one-bedroom layout, but with the possibility to expand by adding a 50-60m² basement, you can increase the living space to 130m² and easily transform it into two or even three bedrooms. Whether you're looking to design a bespoke living space or capitalize on the growing rental market, this is a rare and exciting find. The community itself is a tranquil oasis, featuring beautifully landscaped gardens and communal pools, all just moments away from Puerto Banús and its world-class amenities (located near La Dame de Noche) Whether for personal use or as an investment project, this property offers exceptional potential at an attractive price point.

Features:

None, Pool, Air conditioning, Heating, Mountain views, Private garden, None, Parking, Holiday Home, Investment, Resale