

+34 604 489 646



info@luxury-realty.com

---

Penthouse in Sotogrande Marina

Reference: R4967467



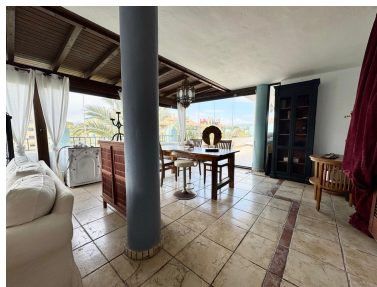
Bedrooms: 6  
Status: Sale

Bathrooms: 4  
Property Type: Penthouse

M<sup>2</sup> Build size: 448  
Parking places: by request

Price: 1,400,000 €  
M<sup>2</sup> Plot Size:

---




---

Overview: Positioned on the private island Isla Carey in Sotogrande Marina, this 6 bedroom duplex penthouse has incredible panoramic ocean views and La Marina views. Sotogrande provides unique waterfront properties and a community filled with many restaurants, and shops, and stone's throw from the beach. Isla Carey has a communal pool, underground parking, and storage room for each apartment. The apartment is west-facing and provides all day sun along with evening sunsets. The apartment is a spacious penthouse with an extended glass curtain enclosed terrace to maximise the living spaces available. The apartment is ideal for a renovation or update to generate more value. The apartment also comes with 6m boat parking.

---

Features:

Beachfront, None, Pool, Air conditioning, Sea views, Lift, None, Private garden, 24H Security, Parking