

Villa in Selwo

Reference: R4968865



Bedrooms: 2

Bathrooms: 1

M² Build size: 131

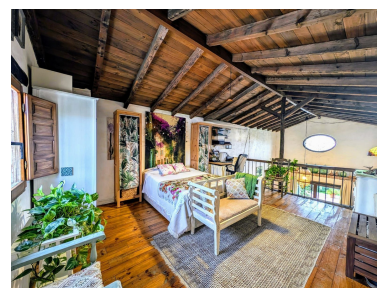
Price: 500,000 €

Status: Sale

Property Type: Villa

Parking places: by request

M² Plot Size: 1,660





Overview: Charming detached two bedroom villa located within the tranquil countryside surrounded by the natural surroundings of Sierra Bermeja, Estepona with its many nature walks and cycling routes. Yet just a 5 minute drive to Guadalmaransa with its beautiful beaches and a short drive to Estepona town with its vast array of local amenities, restaurants and cafes. Spacious yet with a cosy build style, this very private and secluded south facing property offers beautiful views across to the sea and surrounding mountains. Rustic and very comfortable, the property has been designed with plentiful open spaces, large windows and beautiful high wooden beamed ceilings, boasting plenty of natural light. Spacious living and dining area with fully fitted open plan kitchen, two spacious bedrooms and one large bathroom. The property is set within a large plot and garden area with several outside areas and private swimming pool. Parking within the grounds of the villa with space for several cars. This beautiful villa offers the charm of country living yet within just easy reach of modern living.

Features:

Pool, Heating, Sea views, Mountain views, Private garden, None, Parking