

Commercial in Sierra Blanca

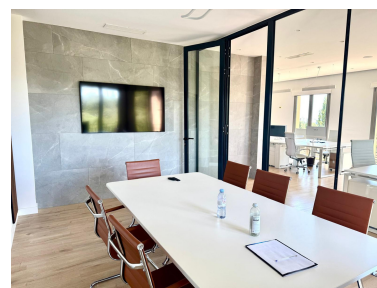
Reference: R4976230



Bedrooms: 3
Status: Sale

Bathrooms: by request
Property Type: Commercial
M² Build size: 120
Parking places: by request

Price: 580,000 €
M² Plot Size:





Overview: MODERN OFFICE IN SIERRA BLANCA, EXCELLENT LOCATION 5 MIN FROM MARBELLA CENTER, 10 MIN TO PUERTO BANUS, EASY PARKING NEXT TO THE BUSINESS CENTER 120 m² built Open plan 2 parking spaces included in the price 1 full bathroom and toilet outside the office Used/in good condition Built in 2000.

Features:

Air conditioning, Sea views, Mountain views, None, Alarm system, 24H Security, Parking