

Apartment in Casares Playa

Reference: R5010610



Bedrooms: 3

Bathrooms: 2

M² Build size: 112

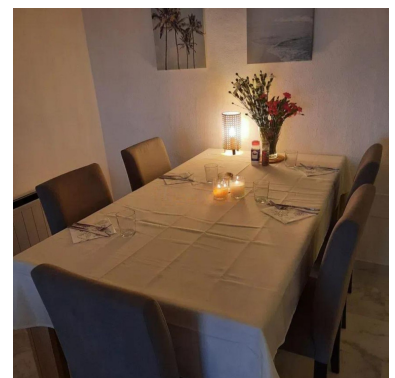
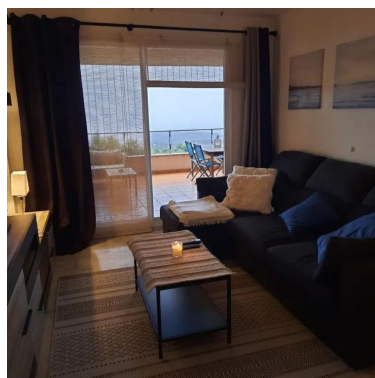
Price: 247,000 €

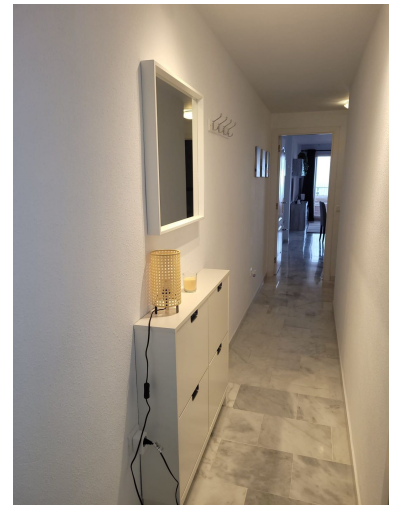
Status: Sale

Property Type: Apartment

Parking places: by request

M² Plot Size:





Overview: the apartment is located on the 1st floor and boasts a large terrace with panoramic views of the sea, mountains, and golf courses. Situated in the Doña Julia residential complex in Casares Costa, it is a 5-minute drive from the beautiful Casares beach, the Sabinillas commercial area, and the charming Puerto de la Duquesa. The picturesque town of Estepona and the Sotogrande urbanization are just 15 minutes away, the famous Marbella 25 minutes, Malaga airport 50 minutes, and Gibraltar airport 20 minutes. This apartment is surrounded by prestigious golf courses such as Finca Cortesin, Doña Julia Golf, Casares Costa Golf, and Valle Romano Golf. The property features a large 30m² terrace, marble floors, 3 bedrooms, 2 modern bathrooms, and is fully furnished. The property is very bright and secure. The complex is located in a 24-hour secure residence, with a shared pool and green spaces, all for a low co-ownership cost of €75/month. The apartment includes 2 underground parking spaces and a storage room." Middle Floor Apartment, Casares Playa, Costa del Sol. 3 Bedrooms, 2 Bathrooms, Built 112 m², Terrace 30 m². Setting : Frontline Golf, Close To Golf, Urbanisation. Orientation : South. Condition : Excellent. Pool : Communal. Climate Control : Air Conditioning, Hot A/C, Cold A/C. Views : Sea, Golf, Panoramic. Features : Covered Terrace, Lift, Fitted Wardrobes, Private Terrace, WiFi, Storage Room, Utility Room, Ensuite Bathroom, Access for people with reduced mobility, Fiber Optic. Furniture : Part Furnished. Kitchen : Fully Fitted. Garden : Communal. Security : Gated Complex. Parking : Underground, Garage, Covered, More Than One, Private. Category : Resale.

Features:

Pool, Air conditioning, Heating, Sea views, Lift, None, Private garden, Parking, Resale