

Penthouse in Benalmadena Costa

Reference: R5032642



Bedrooms: 2

Bathrooms: 1

M² Build size: 79

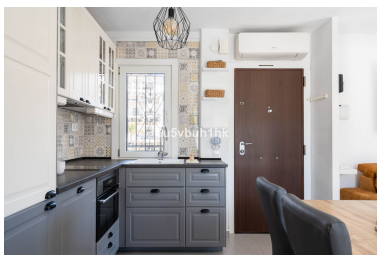
Price: 435,000 €

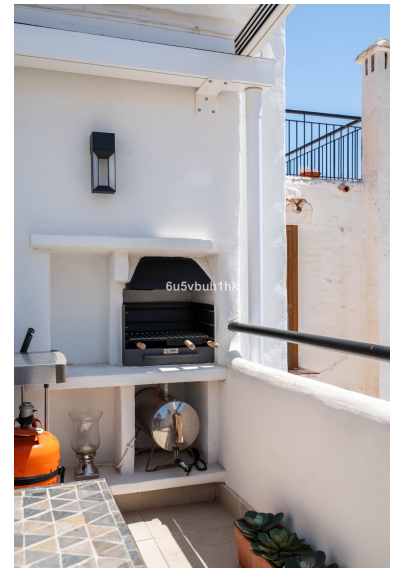
Status: Sale

Property Type: Penthouse

Parking places: by request

M² Plot Size: 79





Overview: Corner penthouse in prime Pueblo Evita location, just steps from the beach and all amenities. Fully renovated to a high Nordic standard and sold fully furnished, this turnkey home is ideal both as a lifestyle property and a highly attractive short-term rental investment. The apartment features a large private terrace with Lumon sliding roof, allowing year-round use with full protection from rain while maintaining natural light. A rare highlight is the indoor-outdoor fireplace, connecting the living room and terrace and creating a unique Mediterranean atmosphere. Key features include: 2 bedrooms, corner penthouse Spacious private terrace with Lumon roofing Tourist rental license in place Fully renovated open-plan kitchen Brand new appliances Living room with fireplace Roof completely replaced Sold fully furnished with high-quality furniture Private garage included (+ Mini Cooper) Well-maintained community with pools and restaurants Thanks to its excellent location on Avenida Las Palmeras, proximity to the beach this property offers strong year-round rental potential and effortless ownership. A rare opportunity in one of Benalmádena's most established communities.

Features:

None, Pool, Air conditioning, Mountain views, None, Private garden, Alarm system, Parking, Beachfront, Holiday Home, Investment, Resale