

Penthouse in Benalmadena

Reference: R5050213



Bedrooms: 3

Bathrooms: 2

M² Build size: 184

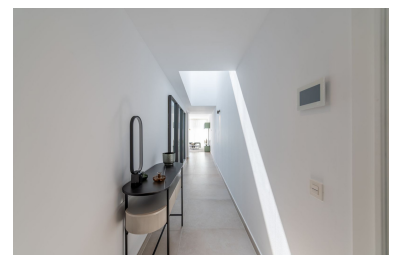
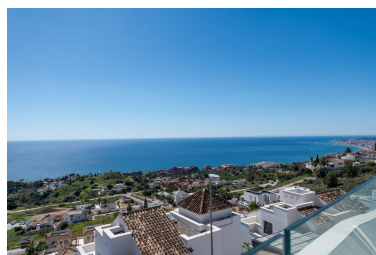
Price: 1,349,000 €

Status: Sale

Property Type: Penthouse

Parking places: by request

M² Plot Size:



Overview:Contact us today Duplex Penthouse with Spectacular Sea Views in Stupa Hills Located next to the prestigious Reserva del Higuerón, this impressive 236m² duplex penthouse is the perfect opportunity to enjoy the luxury, tranquillity, and breathtaking views that only this exclusive area can offer. Designed for those seeking a sophisticated and comfortable lifestyle, the property combines spacious, open, and bright interiors, ideal for experiencing the serenity and natural beauty of the Costa del Sol. The penthouse features three generous bedrooms, offering privacy and comfort, as well as two full bathrooms, finished with high-quality materials. The fully equipped kitchen includes high-end appliances and a practical, functional layout perfect for daily use or entertaining. Without a doubt, one of the most outstanding features of this exclusive property are its two private terraces, where you can enjoy panoramic views of the Mediterranean Sea and the iconic Stupa of Benalmádena. The perfect setting to relax, take in the sunshine, and admire the unforgettable sunrises and sunsets of the Costa del Sol. The property also includes two private parking spaces and a storage room, ensuring convenience and additional space. If desired, the property can be purchased fully furnished and ready to move in, for an additional price. Reserva del Higuerón is synonymous with exclusivity, security, and well-being. Its prime location offers easy access to the beach, shopping centres, restaurants, schools, and a wide range of high-end services, including a spa, gym, and gourmet dining, making it one of the most desirable residential communities on the Costa del Sol, perfect as a permanent home or a high-return investment.

Features:

None, Pool, Sea views, Lift, None, Parking, Holiday Home, Investment, None