

Apartment in Benalmadena Costa

Reference: R5063422



Bedrooms: 2

Bathrooms: 1

M² Build size: 57

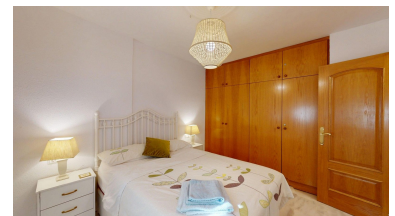
Price: 299,999 €

Status: Sale

Property Type: Apartment

Parking places: by request

M² Plot Size:



Overview:Ground floor flat with terrace in Pueblo del Parque, next to the Parque de la Paloma, Benalmádena Coast. Are you looking to live close to everything, without giving up space and tranquillity? This ground floor flat, located in the sought-after urbanisation Pueblo del Parque (Arroyo de la Miel), has everything you need to live comfortably or invest wisely. It has 2 spacious bedrooms, a complete bathroom, and an updated kitchen that connects to the living room through a serving hatch, ideal to integrate it and create an open and modern space. All west facing, which guarantees natural light in the afternoon and sunsets on the terrace. The jewel of the flat is its private terrace: spacious, partially covered, with direct access to a large sunny swimming pool. Perfect for those who value the outdoor lifestyle. Just a few steps from the Parque de la Paloma, the beach and the train station in the centre of Arroyo. Here you don't need a car to get around. High demand, consolidated location and assured revaluation potential. Ideal for living, renting or simply not to miss a good opportunity. Underground and closed garage (not included in price, can be bought separately). Consult.

Features:

Pool, Air conditioning, Private garden, Lift, None, Parking, Holiday Home, Investment