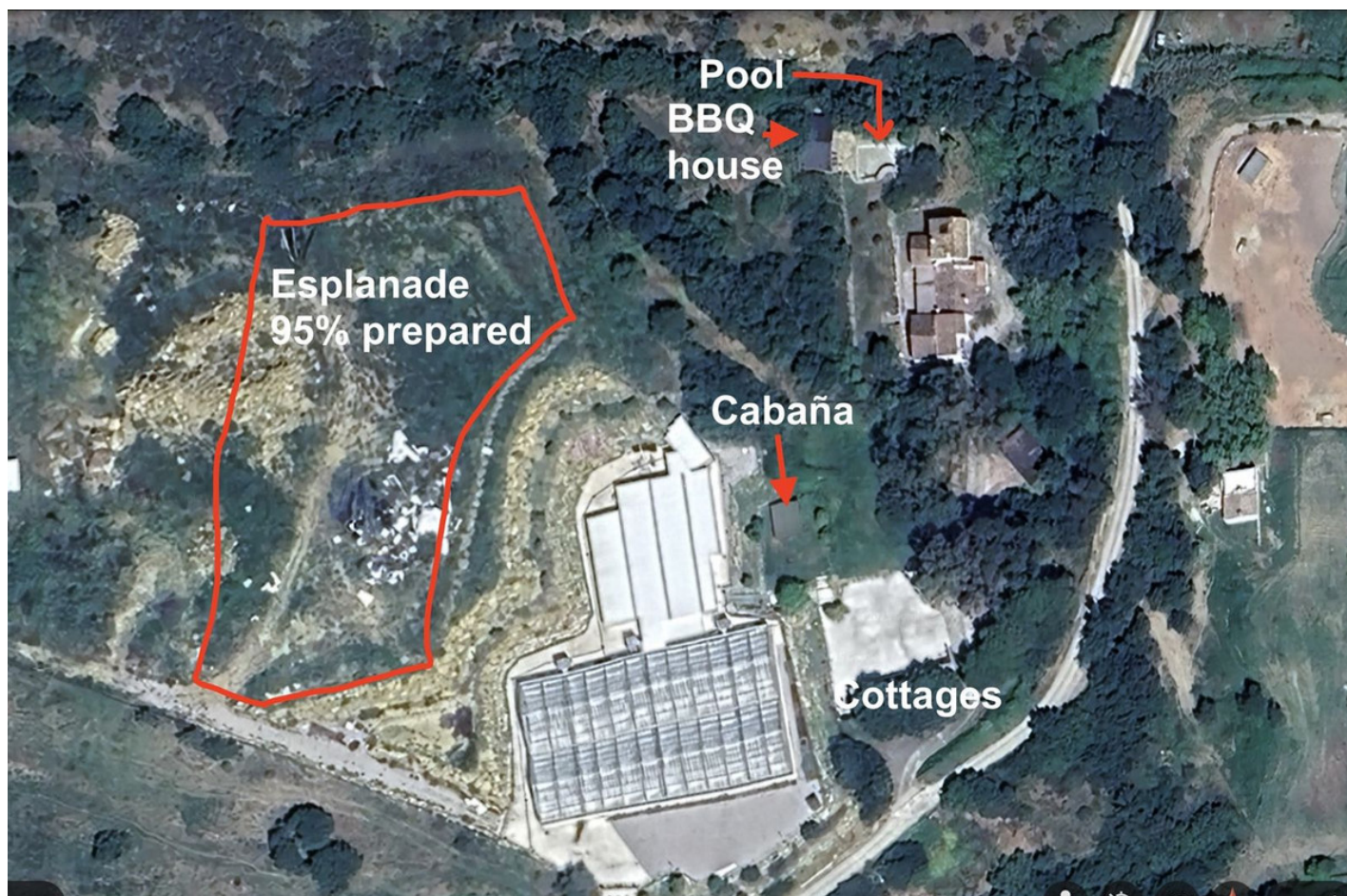


Commercial in Casares

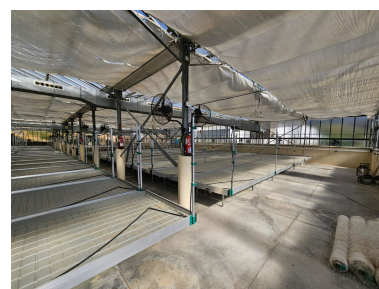
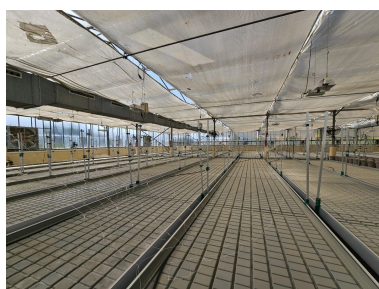
Reference: R5073775



Bedrooms: 6
Status: Sale

Bathrooms: 5
Property Type: Commercial
M² Build size: 2,000
Parking places: by request

Price: 4,250,000 €
M² Plot Size: 45,000



Overview: A Unique, Multi-Faceted Estate - Diverse development potential Tucked between gentle hills and a river, this discreet rural estate offers a rare combination of infrastructure, privacy, and development potential. Currently home to purpose-built, EU-level compliant GMP cultivation facilities, the property also lends itself effortlessly to high-value niche agriculture such as micro-greens or functional fungi. The estate comprises:

- 1250m² of greenhouse grow area plus 550m² of labs and white rooms
- A private, fully equipped equestrian centre
- Two modern, self-contained one-bedroom guest cottages
- A spacious four-bedroom main residence (two en-suite)
- Landscaped leisure area with pool, large BBQ pergola, and panoramic views
- Approx. 6,000m² of prime, flattened land ready for additional projects — from a motorhome park to further agriculture or eco-tourism development
- Nearly 30,000m² of elevated pastureland, ideal for sustainable energy installation (solar or wind potential)
- Natural river border and minimal neighbouring activity (two weekend-only residents)
- Just 5km from the motorway and regional network

This is a site ideal for an entrepreneur with the means and motivation to realise the next chapter in sustainable, rural living — whether wellness, agricultural, equestrian, or eco-tourism focused.

Features:

Pool, Mountain views, None, Private garden, Alarm system, Parking, Investment, Resale