

+34 604 489 646



info@luxury-realty.com

Land in Sotogrande Alto

Reference: R5080126

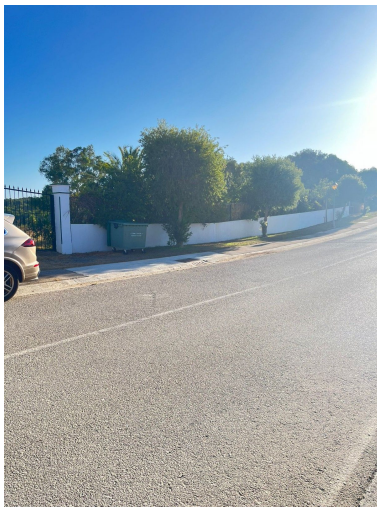
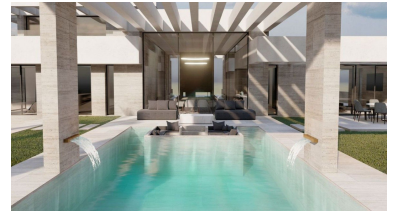


Bedrooms: by request
Status: Sale

Bathrooms: by request
Property Type: Land

M² Build size: 560
Parking places: by request

Price: 625,000 €
M² Plot Size: 2,226



Overview: PLOT OF 2,226m² WITH A BUILDABLE AREA OF 560m² WITH PROJECT EXAMPLE. Plot of 2,226m² with a buildable area of 560m², located in the prestigious Sotogrande urbanization. Just a 5-minute drive from the beach and several golf courses, including the world-famous Valderrama Golf Club. Also very close to supermarkets and shops. The Marina and the international school are no more than 10 minutes away by car. Sotogrande is a high-end residential area, known for hosting one of the most prestigious polo tournaments in the world every summer. It offers a wide variety of sports, such as tennis, padel, sailing, horse riding, and golf at Valderrama. The nearby Almenara Hotel also provides excellent services. Only 10 minutes by car to the coast, the beautiful Marina, numerous restaurants, and leisure areas. Just 5 minutes to the supermarket and the village of Pueblo Nuevo de Guadiaro, where you will find all kinds of amenities. A very peaceful area with excellent views of the surrounding wooded landscapes.

Features:

None, Pool, Private garden