

Land in Cártama

Reference: R5081377

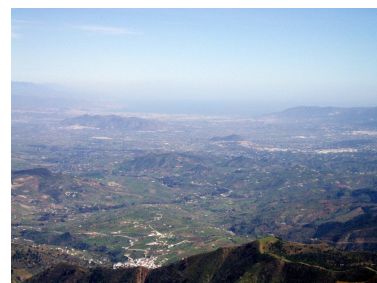
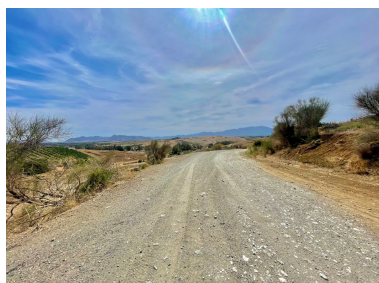


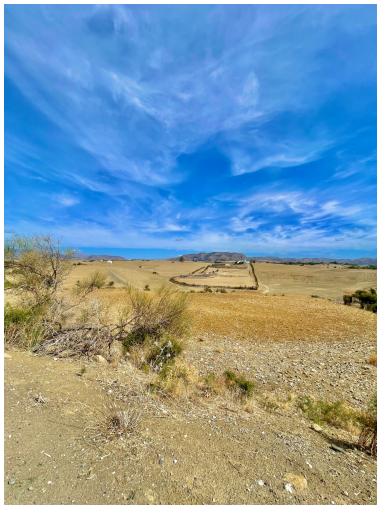
Bedrooms: by request
Status: Sale

Bathrooms: by request
Property Type: Land

M² Build size:
Parking places: by request

Price: 175,000 €
M² Plot Size: 31,680





Overview: GREAT OPPORTUNITY IN CÁRTAMA, MÁLAGA! We present this large terraced rural agricultural land of 31,680 m2 with many possibilities for developing various agricultural and/or rural tourism activities. Located in the municipality of Cártama, in the Casapalma area on the La Loma Lane, a unique enclave due to its majestic landscape and its easy access to the Málaga-Pízarra highway, the Valle del Guadalhorce Hospital, and Málaga City. It has excellent direct access, at the foot of the main path on the La Loma Lane. It offers multiple possibilities: it can be divided into 3 plots and allows the construction of a tool shed, including the possibility of a house for agricultural use, as stated in its building permit certificate. It has water. It is an ideal place to relax and enjoy the outdoors with wonderful panoramic views of the countryside, the mountains, and the Guadalhorce Valley. This land is a magnificent investment, offering a multitude of opportunities through action plans that promote the development of rural tourism in the area and environmental preservation. Don't miss out on this magnificent opportunity.

Features: