

+34 604 489 646

info@luxury-realty.com

---

Land in La Cala de Mijas

Reference: R5109856



Bedrooms: by request  
Status: Sale

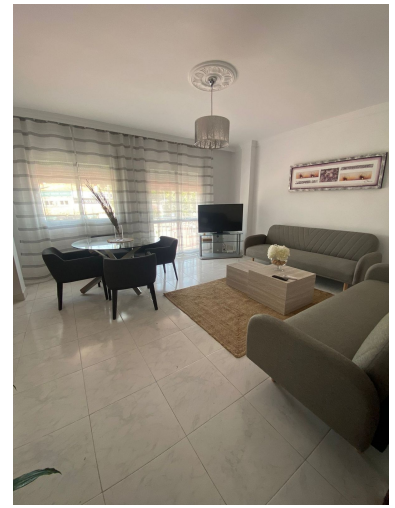
Bathrooms: by request  
Property Type: Land

M<sup>2</sup> Build size: 265  
Parking places: by request

Price: 1,650,000 €  
M<sup>2</sup> Plot Size: 300

---






---

**Overview:** Unique Opportunity in La Cala de Mijas – Property with Excellent Residential & Commercial Potential

**Prime Location** Located on the sought-after Bulevar de La Cala, one of the busiest and most valued streets in Mijas Costa. Just a 3-minute walk from the beach, surrounded by shops, restaurants, schools, health centers, and all essential services. An area experiencing constant tourism and residential growth.

**Property Details** Plot size: 168 m<sup>2</sup>  
 Built area: 260 m<sup>2</sup> Layout: Ground floor: Commercial space with covered terrace – perfect for a restaurant, boutique, or professional office. First floor: Recently renovated apartment, ready to move in or rent out. 3 bedrooms 1 full bathroom Open-plan kitchen and dining area Bright and spacious living room Excellent Development Potential

**Zoning** allows for the construction of 2 additional floors, reaching a total of 4 stories. Unlock multiple investment possibilities: Holiday rentals or tourist apartments Coliving spaces or a boutique hostel Residential + commercial use + vertical expansion Corporate office with integrated residence

**Valuation & Profitability** Official appraisal: €1,740,000 Current asking price: €1,650,000 Strong return on investment through expansion, mixed-use rental, or resale after development.

**Key Advantages**

- Unbeatable location in a high-demand area
- Expandable project with immediate potential
- Versatile property: residential, commercial, or mixed-use
- Ideal for tourism projects, housing, long-term investment, or business headquarters

Contact us today to arrange a visit and discover this urban gem with huge potential in the heart of the Costa del Sol.

---

**Features:**

None