

Villa in Manilva

Reference: R5110435

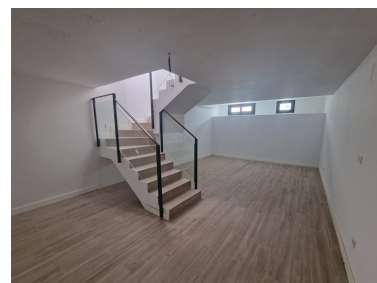


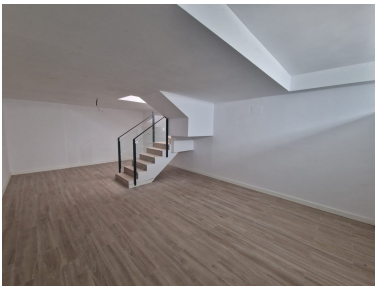
Bedrooms: 2  
Status: Sale

Bathrooms: 2  
Property Type: Villa

M<sup>2</sup> Build size: 128  
Parking places: by request

Price: 349,000 €  
M<sup>2</sup> Plot Size: 153





---

Overview: New Development: Prices from 349,000 € to 489,000 €. [Beds: 2 - 3] [Baths: 2 - 3] [Built size: 128.00 m<sup>2</sup> - 207.00 m<sup>2</sup>] VILLA 1 207.45 m<sup>2</sup> built on a 240 m<sup>2</sup> plot. It has 3 bedrooms, 3 bathrooms, living room, kitchen, terrace, private garden, private garage for 2 vehicles, basement with natural light and excellent sea views.

SEMI-DETACHED HOUSE 2 128.25 m<sup>2</sup> built on a 153 m<sup>2</sup> plot. It has 2 bedrooms, 2 bathrooms, living room, kitchen, terrace, private garden, parking area within the plot, basement with natural light and excellent sea views.

SEMI-DETACHED HOUSE 3 128.25 m<sup>2</sup> built on a 138 m<sup>2</sup> plot. It has 2 bedrooms, 2 bathrooms, living room, kitchen, terrace, private garden, parking area within the plot, basement with natural light and excellent sea views.

SEMI-DETACHED HOUSE 5 128.25 m<sup>2</sup> built on a 156 m<sup>2</sup> plot. It has 2 bedrooms, 2 bathrooms, living room, kitchen, terrace, private garden, parking area within the plot, basement with natural light and excellent sea views.

---

Features:

New development, Sea views, Mountain views, Private garden, None, Parking