

Penthouse in Manilva

Reference: R5111425



Bedrooms: 2

Bathrooms: 2

M² Build size: 122

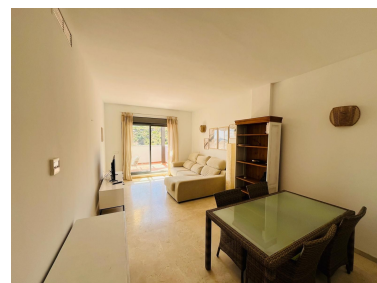
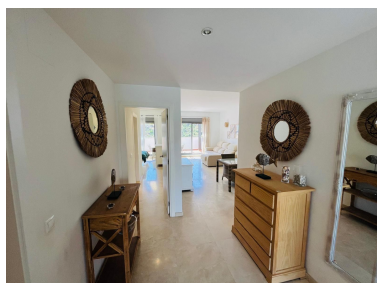
Price: 275,000 €

Status: Sale

Property Type: Penthouse

Parking places: by request

M² Plot Size:





Overview: The Affordable Sea View Penthouse To have a sea view south facing terrace with views as far as Gibraltar and Africa at this price point is rare. This property is the perfect holiday home and residence for those that want peace and quiet coupled with easy accessibility to Sotogrande/Torreguadiaro for restaurants and beach life. 2 bedrooms, 2 bathrooms, tastefully decorated and meticulously presented The terrace is 20m2 and the whole property is approx 120m2 built with underground parking and large storage room. The community has a lovely pool and Padel court. It is well maintained and with prices rising, this is simply a great resale option.

Features:

Pool, Air conditioning, Heating, Sea views, Mountain views, Lift, None, Private garden, Parking, Holiday Home, Investment, Resale