

Land in Benalmadena

Reference: R5148694



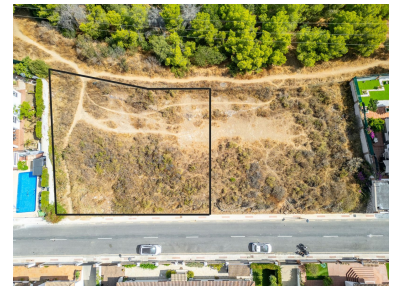
Bedrooms: by request
Status: Sale

Bathrooms: by request
Property Type: Land

M² Build size:
Parking places: by request

Price: 420,000 €
M² Plot Size: 650





Overview: Located in the well-known Torrequebrada neighbourhood, in the coastal town of Benalmádena, this 650 m2 plot is perfect for those who want to build their dream home near the beach. The plot is a 20-minute walk from Benalmádena beach, with shops, restaurants and bars nearby. The famous Torrequebrada golf course is a 5-minute drive away. The area is known for its tranquillity and privacy, and is just a few minutes' walk from the new 23.21-hectare Albaytar park. The location is privileged, not only because it is close to the beach and amenities, but also to the Arroyo de la Miel train station.

Features:

None, Mountain views