

Apartment in Estepona

Reference: R5156251



Bedrooms: 2

Bathrooms: 2

M² Build size: 89

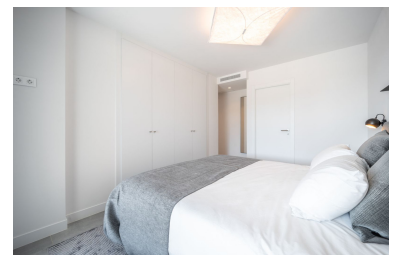
Price: 595,000 €

Status: Sale

Property Type: Apartment

Parking places: by request

M² Plot Size:



Overview:Stunning 2-bed Apartment. Presenting a rare opportunity to own this new, modern, recently constructed 2-bed apartment in Phase 2 of Oasis325. Positioned with south orientation which gives you sun from morning till evening and it offers a breathtaking panoramic sea view. Nestled within the esteemed Golf La Resina area adjacent to the Selwo Zoo, Oasis325 embodies contemporary elegance and Mediterranean living at its finest. Featuring a modern-inspired interior, the apartment showcases an open-plan layout seamlessly connecting the fully equipped kitchen and living room to a big terrace, ideal for al fresco dining amidst the stunning backdrop of Gibraltar and the Atlas Mountains. This residence is truly a gem, accentuated by its terrace with a glass balustrade and large windows inviting abundant natural light indoors. Residents of Oasis325 enjoy an array of amenities, including a heated indoor pool, gym, spa, and social area, all set within lush landscaped gardens. For added comfort during the winter months, floor heating has been installed to both bathrooms. Conveniently located between Estepona and Marbella, this modern urbanization offers swimming pools, gardens, a spa with sauna and hammam, an indoor heated pool, hydro-massage area, and a fully equipped gym. Included with the apartment is one parking space and a storage room in the underground garage. The apartment has a touristic license and is already successfully used for short-term rentals. Rental figures are available upon request. Strategic location, stunning terrace views, convenient layout, and high rental yield make this property an excellent investment opportunity.

Features:

None, Pool, Air conditioning, Heating, Sea views, Private garden, Lift, None, Alarm system, 24H Security, Parking, Holiday Home, Investment, None, Resale