

Penthouse in Elviria

Reference: R5160229

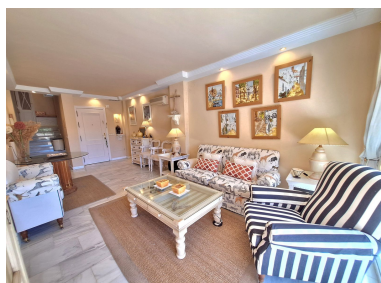


Bedrooms: 2  
Status: Sale

Bathrooms: 2  
Property Type: Penthouse

M<sup>2</sup> Build size: 107  
Parking places: by request

Price: 599,000 €  
M<sup>2</sup> Plot Size:





---

Overview:BEACHSIDE ELVIRIA This perfectly located 2 bedroom, 2 bathroom Penthouse Duplex, is set within a few minutes walk of The beaches of Elviria with 2 beachfront restaurants within easy reach (El Laurel & Blanca Perla) and the natural sand dunes of Romana Playa. A well serviced commercial centre is within a 1 min drive of the property where you can find every amenity needed. As you enter the property you have a living & dining room area leading onto the south facing spacious terrace with south facing views towards the sea & communal garden (manual toldos covering the whole terrace to add shade ). On your right as you enter you have a very compact kitchen with natural light (can be opened up to extended). As you come back through the living area you have a ground floor double bedroom with ensuite shower room with natural light. Also terrace access (manual shutter blinds). From the living area you have stairs leading to the top floor where you will find the master suite. Wonderful high ceilings and lots of natural light throughout. A great size room with customised wardrobes and ensuite bathroom with shower. Also a private terrace to enjoy the all day sun. AIRCON THROUGHOUT THE PROPERTY The property is within a gated urbanisation offering 2 communal pools (Adult & Kids) & underground parking surrounded by Cork and Pine trees, in a natural safe and secure environment. No elevator \*\*THE COMMUNITY ALLOWS SHORT TERM RENTALS\*\*\* VIDEO AVAILABLE ON REQUEST

---

Features:

None, Pool, Air conditioning, Sea views, Private garden, None, 24H Security, Parking