

---

Terraced Townhouse in Atalaya

Reference: R5168704



Bedrooms: 3

Status: Sale

Bathrooms: 3

Property Type: Terraced  
Townhouse

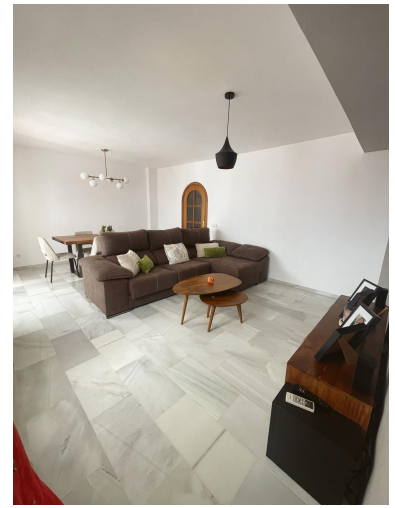
M<sup>2</sup> Build size: 201

Parking places: by request

Price: 655,000 €

M<sup>2</sup> Plot Size:






---

Overview: Semi-detached house for sale next to the Atalaya Golf Course. The house is distributed over three floors:

- Main floor: (57.5 m<sup>2</sup>) kitchen, small laundry room, living room (with the option of opening the fireplace, which has been blocked by the current owner), and a large west-facing terrace.
- First floor: (62 m<sup>2</sup>) three bedrooms and two bathrooms, the master en suite.
- Second floor: (9.60 m<sup>2</sup>) solarium with sea and mountain views.
- Ground floor: (66.50 m<sup>2</sup>) storage area and parking for several vehicles. Possibility of building an apartment and a bathroom.

Small, family-friendly development with a communal pool.

---

#### Features:

Pool, Air conditioning, Sea views, Mountain views, None, Parking, Holiday Home, Investment, None