

Apartment in Puerto Banús

Reference: R5191630

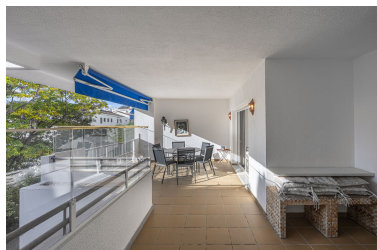


Bedrooms: 2  
Status: Sale

Bathrooms: 2  
Property Type: Apartment

M<sup>2</sup> Build size: 110  
Parking places: by request

Price: 700,000 €  
M<sup>2</sup> Plot Size:



Overview: Two-bedroom, two-bathroom flat with a spacious living/dining room opening onto a large terrace. Kitchen plus utility room. One parking space included in the price. The master bedroom also has access to the large west-facing terrace. Gated community with 24-hour security. Large gardens, paddle tennis court and swimming pool. Close to all amenities such as restaurants, supermarkets, gym, pharmacy and 200 metres from Puerto Banús beach.

---

Features:

None, Pool, Air conditioning, Heating, Lift, None, Private garden, 24H Security, Parking