

Villa in Benahavís

Reference: R5226850

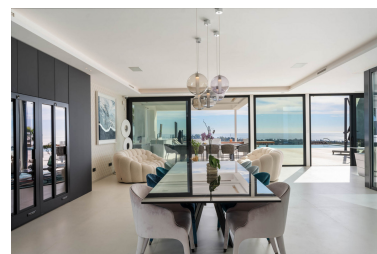
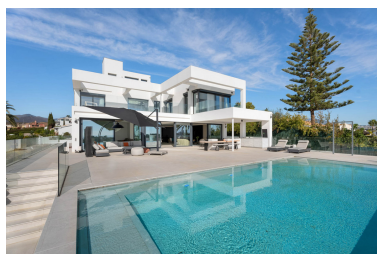


Bedrooms: 6
Status: Sale

Bathrooms: by request
Property Type: Villa

M² Build size: 794
Parking places: by request

Price: 4,980,000 €
M² Plot Size: 1,500





Overview: This designer villa in Paraiso Alto is presented as a contemporary residence created for those seeking privacy, ample space and a direct connection with the surroundings. Its elevated position allows views of El Paraíso Golf, the Mediterranean, Gibraltar, the African coastline and La Concha Mountain from various rooms and outdoor areas, creating a distinctive visual setting. The property is arranged across several levels connected by a lift, with generous interiors and natural light that flows throughout the home. On the main floor, the living areas open onto the terrace and garden through large windows that link the exterior with the interior. The infinity pool extends toward the horizon, reinforcing the sense of continuity with the landscape. The villa offers six bedrooms, all with en-suite bathrooms designed for comfort and privacy. The primary suite enjoys sea views and access to a private terrace. The upper level includes a solarium with a jacuzzi and panoramic views stretching from the golf course to Africa, providing a dedicated space to take in the surroundings from the highest point of the property. The lower level houses the wellness and entertainment areas, including a cinema room, gym, sauna and an independent space designed for gatherings. The property also features a large garage with turning platforms to facilitate easy manoeuvring. A centralised home-automation system allows remote control of various aspects of the villa, while the high-capacity solar installation contributes to energy efficiency. The overall design prioritises clean lines, balanced proportions and fluid transitions between spaces. Located less than ten minutes from the beach and with quick access to Puerto Banús and Marbella, this villa offers a contemporary residence in a well-established area of Benahavís, combining space, open views and an architectural layout planned for everyday living.

Features:

Pool, Air conditioning, Sea views, Mountain views, Private garden, Lift, None, Alarm system, 24H Security, Parking, None