

Commercial in Estepona

Reference: R5294503

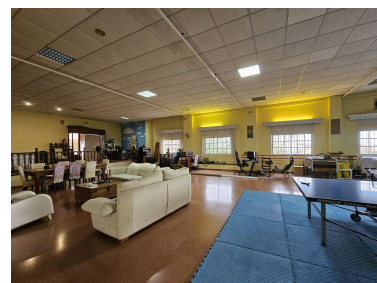


Bedrooms: by request
Status: Sale

Bathrooms: 1
Property Type: Commercial
Parking places: by request

M² Build size: 520

Price: 699,000 €
M² Plot Size:





Overview:AMAZING REDUCED AGAIN!!!!!! Rare opportunity investment in a centric area of Estepona! With a 5 minute walk to the city centre we present you here a large two storey industrial estate with several different qualities, because of the location it could offer itself for a business, or several ones, or maybe someone with a bigger plan will want to construct something different here. It has been used in the passed as a workshop downstairs and upstairs a school, a private childrens school, there are toilets and there is a bar and a large kitchen, also does it have a 40m2 office upstairs. The total amount of m2 built is 520M2, this is a wopping 260m2 per level. Downstairs there is a lovely patio area and upstairs even a bigger one, but facing the other side. Located on the top of a mountain on the border of the centre of Estepona, close to all amenities including theatre, playgrounds, schools, etc. This has heaps of potential, who sees this. If you have an idea or suggestion, do please contact us, we are here to help you to realise your next big dream!

Features:

Mountain views, None, Investment, Resale