

Penthouse in San Pedro de Alcántara

Reference: R5314504

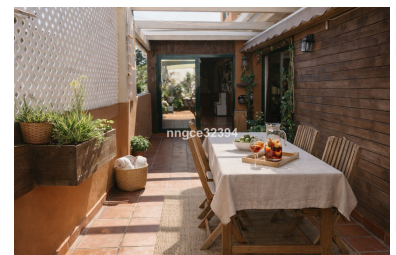
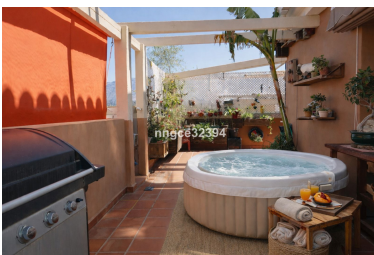


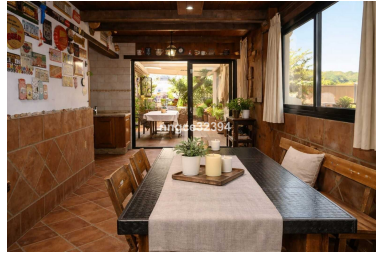
Bedrooms: 4
Status: Sale

Bathrooms: 3
Property Type: Penthouse

M² Build size: 200
Parking places: by request

Price: 599,900 €
M² Plot Size:





Overview: Spacious Duplex Ático with Wrap-Around Terrace and Beautiful La Concha Views in San Pedro This charming 225 m² duplex ático is located in a secure residential building within a peaceful, pueblo-style community in San Pedro de Alcántara, offering generous living space, authentic rustic character, and beautiful open views of La Concha from both levels. The home features four bedrooms and three bathrooms along with plenty of storage throughout. Its warm, rustic style gives the property a comfortable and inviting atmosphere, while the spacious layout provides flexibility for family living, guests, or working from home. One of the standout features is the large wrap-around terrace, which offers ample space for outdoor dining, relaxing, entertaining, or even adding a Jacuzzi. The terrace is already equipped with an outdoor shower and has room for a BBQ and lounge areas, creating a wonderful extension of the indoor living space. The property also benefits from a very spacious private garage located underneath the building, providing secure parking and additional storage. Despite its quiet residential setting, the location is extremely convenient. The home is within walking distance of local cafés, shops, Mercadona, and popular spots such as Tejeringos Coffee Shop, while San Pedro Playa is only about 3.5 km away. This property offers a rare combination of generous interior space, large outdoor living areas, mountain views, and a central San Pedro location, making it ideal as a family home, holiday base, or long-term residence on the Costa del Sol.

Features:

None, Air conditioning, Heating, Mountain views, Lift, None, Private garden, Alarm system, 24H Security, Parking, Investment, Resale