

Apartment in Atalaya

Reference: R5332471

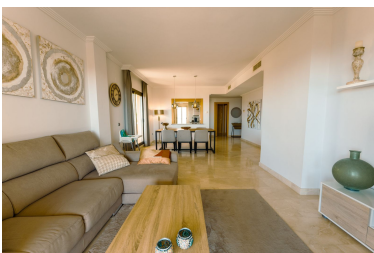


Bedrooms: 2  
Status: Sale

Bathrooms: 2  
Property Type: Apartment

M<sup>2</sup> Build size: 120  
Parking places: by request

Price: 585,000 €  
M<sup>2</sup> Plot Size:



Overview: Located in the sought-after Hacienda de Señorío de Cifuentes within La Alquería, Benahavís, this middle-floor apartment with panoramic sea views offers an excellent opportunity for both investors and end users. The property currently features 2 bedrooms and 2 bathrooms and enjoys a south-facing orientation, allowing for abundant natural light and spectacular views of the Mediterranean coastline. The apartment is in original condition, giving buyers the perfect opportunity to renovate and add value. There is also potential to convert the property into a 3-bedroom apartment, making it an attractive investment. Set within a secure gated community with 24/7 security, residents benefit from beautifully maintained surroundings and high-quality facilities. The community includes a heated swimming pool, with a gym scheduled to open soon, further enhancing the lifestyle offering. The apartment also includes one underground parking space and a private storage room. Located in the growing La Alquería area, the property sits next to the Be Lagom development and is just a short drive from Benahavís village, Marbella, golf courses, beaches, and all amenities. Short-term rentals are allowed, making this an excellent opportunity for investment, holiday use, or permanent living on the Costa del Sol.

---

#### Features:

Pool, Sea views, Private garden, 24H Security, Parking, Holiday Home, Investment