

Land in Sotogrande

Reference: R5343058

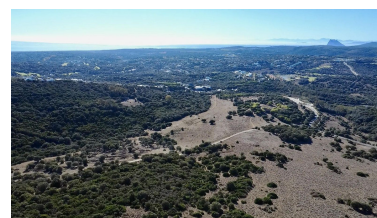
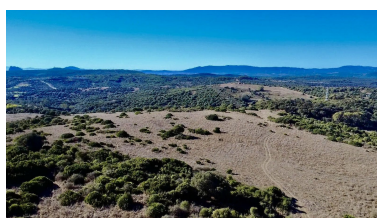
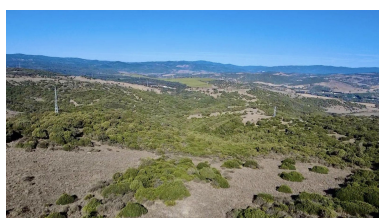


Bedrooms: by request
Status: Sale

Bathrooms: by request
Property Type: Land

M² Build size: 756,762
Parking places: by request

Price: 18,000,000 €
M² Plot Size: 756,762



Overview: Exceptional Agricultural Estate for Sale – Sotogrande, Andalusia. Discover a rare opportunity to own a vast 1,870,000 m² (187 hectares) agricultural estate set amid the breathtaking countryside of Sotogrande, one of the most exclusive areas in southern Spain. This impressive finca offers outstanding potential for farming, livestock, organic agriculture, or ecological preservation, ideal for those seeking space, privacy, and a deep connection with nature. The land is officially classified as non-buildable, though it is currently possible to apply for planning permission on approximately 20 hectares. This ensures that the remaining area's natural beauty and rural integrity remain protected. The estate may be used for agricultural or livestock purposes only. Perfectly located just a short drive from Sotogrande's beaches, golf courses, and marinas, the property combines the tranquility of Andalusian country living with convenient access to the coast and nearby towns such as Estepona, Manilva, and San Roque.

Key Features
Total area: 1,870,000 m² (187 hectares)
Non-buildable agricultural classification
Possibility to request planning permission on 20 hectares
Ideal for farming, livestock, or ecological projects
Peaceful rural setting near Sotogrande
Strong investment potential in southern Spain
A truly unique opportunity to invest in the natural heart of Andalusia, combining authenticity, scale, and proximity to one of the region's most prestigious destinations.

Features: