

Apartment in La Cala Golf

Reference: R5346022

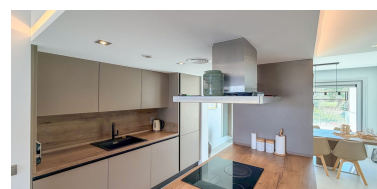


Bedrooms: 2
Status: Sale

Bathrooms: 2
Property Type: Apartment

M² Build size: 95
Parking places: by request

Price: 499,000 €
M² Plot Size:





Overview: Stunning 2 Bed, 2 Bath Apartment in Grand View – La Cala Golf Located in the sought-after La Cala Golf Resort, this beautiful and spacious 2-bedroom, 2-bathroom apartment in Grand View offers the perfect combination of peace, views, and lifestyle. The apartment is bright and generously sized, designed to maximise natural light with large windows and open living spaces. It features two large terraces with different orientations (south and east-west), ensuring sun all day long and allowing you to enjoy truly panoramic views of Sierra de Mijas mountains, and even the sea, the other terrace has garden, pool and views over the golf course. Positioned frontline golf, the property sits in a quiet and private setting surrounded by nature, yet just a few steps from the clubhouse and all the facilities of the resort. The apartment has been hardly used, serving only as a family holiday home, and is presented in excellent condition. Grand View is a private gated community with beautifully maintained tropical gardens and two swimming pools, perfectly integrated into the natural surroundings. All properties in the development are built to modern European standards with high-quality finishes and large terraces designed for indoor-outdoor living. The property also includes: • Private underground garage parking • Storage room • Plenty of additional parking outside the building The location is ideal, within the resort you have access to three 18-hole golf courses, spa, gym, tennis courts, and restaurants, while the charming village and beaches of La Cala de Mijas are just 10 minutes away. Perfect as a holiday home, investment, or peaceful full-time residence.

Features:

Pool, Air conditioning, Heating, Sea views, Mountain views, Private garden, Lift, None, 24H Security, Parking, Investment, None, Resale