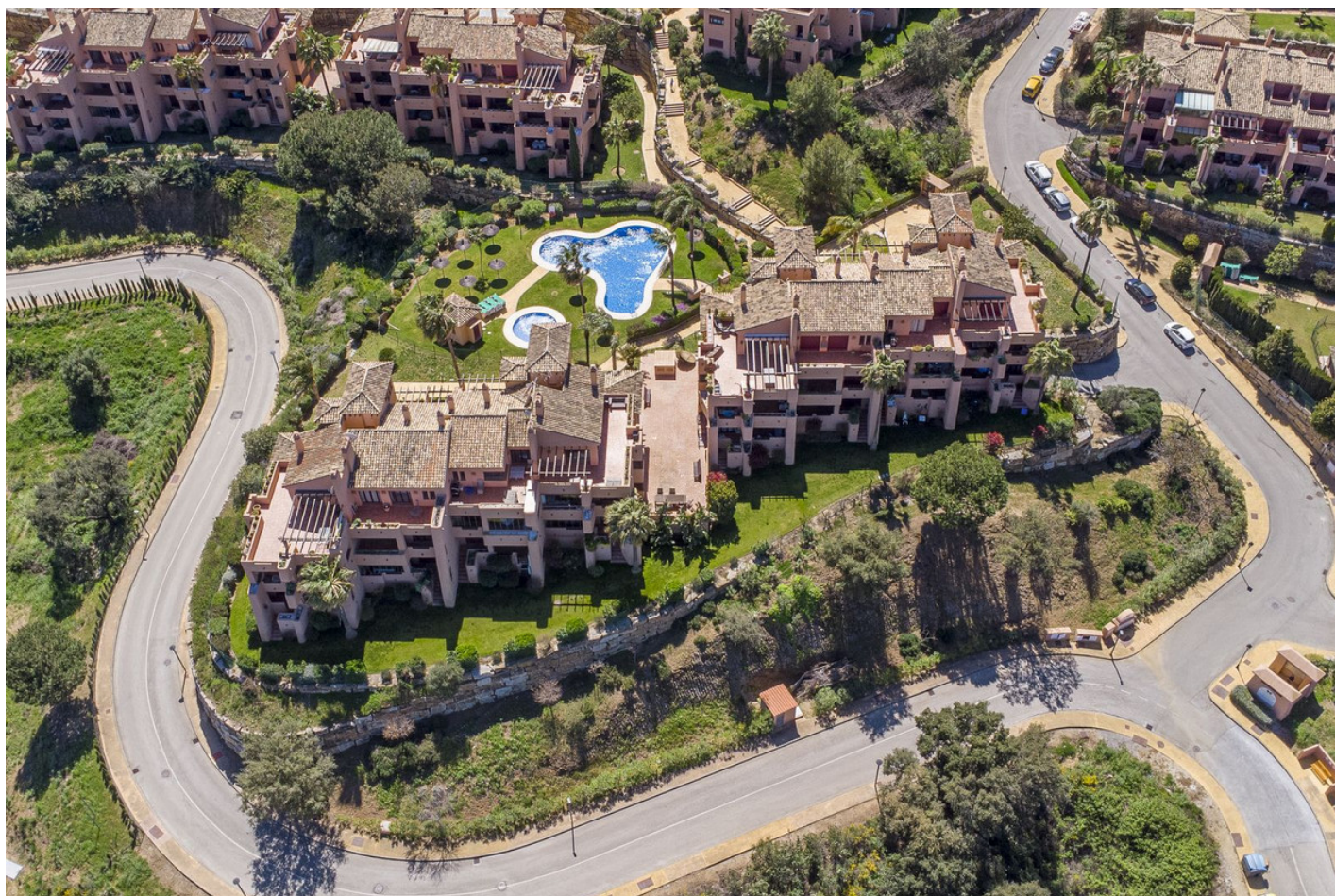


Apartment in La Mairena

Reference: R5351347

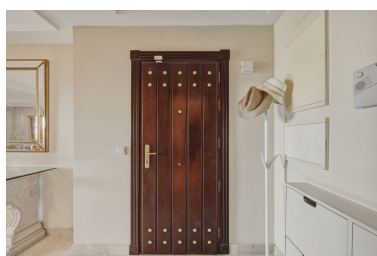
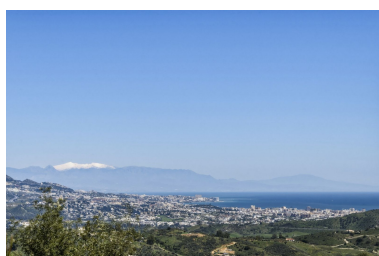


Bedrooms: 2  
Status: Sale

Bathrooms: 2  
Property Type: Apartment

M<sup>2</sup> Build size: 117  
Parking places: by request

Price: 365,000 €  
M<sup>2</sup> Plot Size:



Overview: Beautiful corner apartment located in Phase 2 of El Soto de Marbella, offering a spacious and well-designed layout. The property enjoys stunning panoramic views of the mountains, Fuengirola, the Mediterranean Sea, and Sierra Nevada. It features a bright living area, a primary bedroom with en-suite bathroom, and a good-sized terrace ideal for outdoor living. Residents benefit from excellent communal facilities including landscaped gardens, several swimming pools, a 9-hole golf course, on-site restaurant, tennis, padel and pickleball courts, as well as a fully equipped gym and spa area.

---

Features:

Pool, Air conditioning, Heating, Mountain views, Lift, None, Private garden, Parking, Holiday Home, Investment, Resale