

Commercial in Aloha

Reference: R5356435

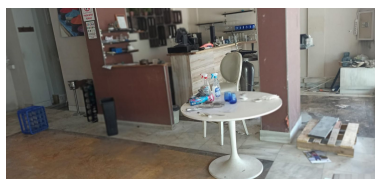


Bedrooms: by request
Status: Sale

Bathrooms: by request
Property Type: Commercial

M² Build size: 207
Parking places: by request

Price: 4,000 €
M² Plot Size:



Overview: A spacious commercial premises occupying a highly visible street front position on the Aloha strip. The premises traded until recently as a restaurant and would lend itself well to a similar business. In addition the property is suited to many retail or office type businesses. The upper level offers a good sized display or working area with direct access to a large terrace. On the lower level there is a vast basement area that provides a extensive space for the storage of materials and products for many business types. No traspaso cost.

Features: