

Villa in Estepona

Reference: R5362441

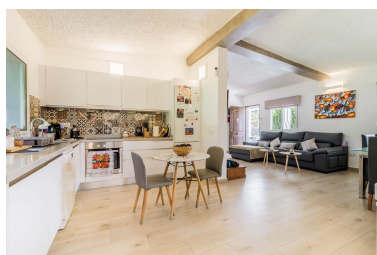
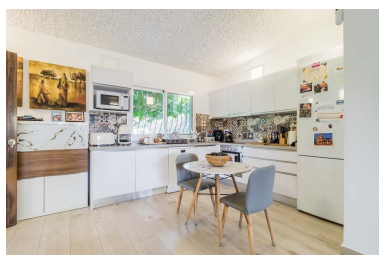


Bedrooms: 2
Status: Sale

Bathrooms: 2
Property Type: Villa

M² Build size: 91
Parking places: by request

Price: 695,000 €
M² Plot Size: 2,800



Overview: Charming country house located on the outskirts of Estepona, just a 5-minute drive from the town centre, where you will find all kinds of services and amenities. The property sits on a spacious 2,800 m² rectangular plot, offering privacy and a wide range of possibilities. The house, measuring 90 m², has been recently renovated and comprises two double bedrooms, one full bathroom inside the house and a second bathroom with independent access from the terrace, ideal for use by the pool area or for guests. It also features a bright living-dining room with a fireplace and air conditioning, seamlessly connected to a fully equipped open-plan kitchen. The property benefits from high-quality features such as porcelain flooring, fibre optic internet, double-glazed windows, shutters, and mosquito screens, ensuring comfort throughout the year. Outside, there is a spacious 40 m² front porch with a barbecue area, perfect for enjoying the natural surroundings, as well as a smaller rear porch. The property also includes covered parking for two vehicles, with additional space on the plot for several more. Separately, there is a large storage/laundry room with great potential to be converted into an additional bedroom, studio, or guest accommodation. The estate includes a private 40 m² swimming pool and excellent equestrian facilities: stables for up to 5 horses, a tack room, and a 66 m² riding arena. The rest of the land is planted with a variety of fruit trees, including avocados, lemon trees, mango trees, and orange trees, creating a natural and productive environment. An ideal property both as a permanent residence, thanks to its proximity to the town, or as a second home to enjoy the countryside.

Features:

Pool, Air conditioning, Mountain views, None, Private garden, Alarm system, Parking