

+34 604 489 646

info@luxury-realty.com

---

Apartment in Nueva Andalucía

Reference: R5365048

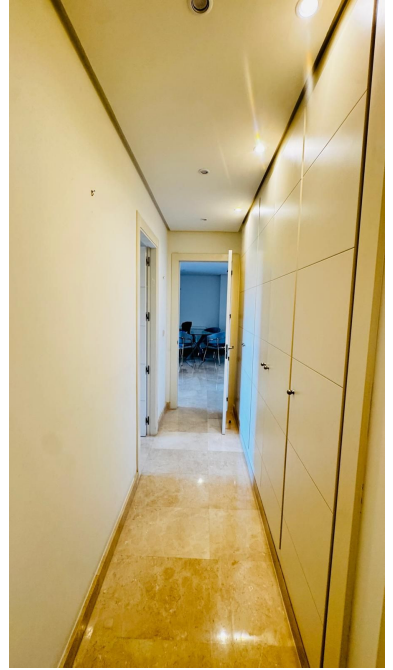


Bedrooms: 2  
Status: Sale

Bathrooms: 2  
Property Type: Apartment

M<sup>2</sup> Build size: 175  
Parking places: by request

Price: 650,000 €  
M<sup>2</sup> Plot Size:



Overview: Modern 2-Bedroom Apartment with Sea Views in Nueva Andalucía, Marbella This bright and contemporary apartment is located in the sought-after hills of Aloha, in Nueva Andalucía, Marbella, within the exclusive gated community of Vista Real, offering 24-hour security and a peaceful environment. The spacious living and dining areas, fully equipped kitchen, and both bedroom suites all enjoy direct access to a large south-facing terrace. From here, you can take in beautiful green surroundings, views over one of the swimming pools, and partial sea views. The property features two en-suite bedrooms, both with jet bathtubs and bidets. The master suite also includes a generous Italian walk-in shower and a window providing natural light and ventilation. A rare highlight in modern apartments is the abundance of storage space, with multiple built-in wardrobes in both bedrooms and the hallway. Additional features include electric blinds on all windows, central air conditioning (hot and cold), and a spacious modern kitchen fitted with mostly Bosch appliances, recently upgraded. The kitchen also includes a separate laundry and storage area, with the possibility to open it up for direct terrace access. The property comes with two private parking spaces and a large storage room included in the price. The furniture is new and can be negotiated. Ideally located just a few minutes' drive from Puerto Banús, Marbella town, and the Aloha commercial area, this apartment is perfect as a holiday home, rental investment, or full-time residence. A turnkey property in a quiet, beautifully maintained community. Important advantage: the community allows short-term rentals with a minimum stay of 15 days, making this property ideal for rental income.

---

Features: