

Villa in Benahavís

Reference: R5389036



Bedrooms: 6

Bathrooms: by request

M² Build size: 806

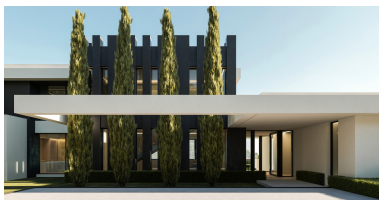
Price: 7,900,000 €

Status: Sale

Property Type: Villa

Parking places: by request

M² Plot Size: 3,082



Overview: New Development: Prices from 7,900,000 € to 7,900,000 €. [Beds: 6 - 6] [Baths: 6.5 - 6.5] [Built size: 806.00 m² - 806.00 m²] The project is one of a private collection set in the prestigious gated community of La Reserva de Alcuzcuz in Benahavís — a secluded natural enclave between forest and sea, just minutes from Marbella and Puerto Banús. This villa is surrounded by greenery and gently oriented towards the southwest, with a layout that follows the natural slope of the land and opens elegantly towards the landscape. Distributed across three levels on a 3,082 m² plot, the residence is designed to maximise privacy, light, and the connection with its natural surroundings. On the main floor, a spacious open-plan living, dining, and kitchen area extends seamlessly towards terraces, gardens, and a private swimming pool with a shallow water area. The main living spaces are complemented by a service kitchen, guest WC, and two en-suite bedrooms, carefully positioned to balance openness and privacy. Large glazed openings allow natural light to flow throughout the interiors while framing panoramic views of the sea and surrounding landscape. Upstairs, the principal suite enjoys elevated views and direct connection to the surrounding terraces, accompanied by two additional en-suite bedrooms designed with the same sense of calm and discretion. The architecture maintains visual continuity between indoor and outdoor spaces, reinforcing the villa's serene atmosphere. The lower level discreetly integrates the garage, laundry room, storage, and technical areas, preserving the purity of the architectural lines and supporting daily life with complete functionality. A private lift connects all levels seamlessly throughout the home. The villa proposes a seamless indoor-outdoor lifestyle, where the contemporary architecture of Tobal Arquitectos coexists in harmony with nature. Expansive terraces, landscaped gardens, premium materials, and floor-to-ceiling glazing create a continuous relationship between the interiors and the surrounding environment. Set within one of the Costa del Sol's most private and elevated residential communities, the villa is designed for a life defined by tranquillity, space, and understated luxury — with Marbella, golf courses, beaches, and the Mediterranean always within close reach.

Features:

New development, Pool, Sea views, Private garden, Lift, None, Parking