

Commercial in Estepona

Reference: R5389870



Bedrooms: by request  
Status: Sale

Bathrooms: by request

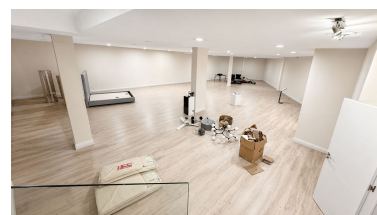
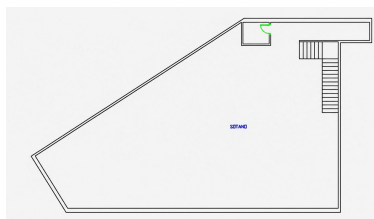
M<sup>2</sup> Build size: 460

Price: 950,000 €

Property Type: Commercial

Parking places: by request

M<sup>2</sup> Plot Size:



Overview:Commercial Premises for Sale or Rent in Atalaya Park, Estepona – New Golden Mile RENTAL CONDITIONS: 1 MONTH FREE RENT INCLUDED. 12–24 MONTH RENT TO BUY OPTION AVAILABLE. Excellent commercial property located in one of the most visible and accessible areas at Atalaya Park between Estepona and San Pedro. Positioned just off the A-7, this premises benefits from fantastic roadside visibility, easy access, and parking alongside making it an ideal location for a wide range of businesses. The area is well positioned between Estepona, San Pedro, Marbella, and Benahavís, with a strong mix of residential communities, passing traffic, and local businesses. The property offers a spacious main commercial area plus a basement level, providing excellent flexibility for storage, offices, staff areas, stock, or additional workspace. Thanks to its layout and location, it is perfectly suited for offices, a showroom, retail shop, gym, wellness centre, clinic, studio, or almost any commercial business looking for a high visibility location on the Costa del Sol.

---

Features:

None, Air conditioning, Alarm system, Parking