

Land in Sotogrande

Reference: R5406502

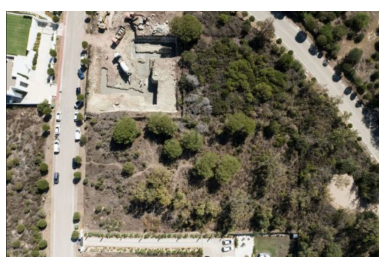


Bedrooms: by request  
Status: Sale

Bathrooms: by request  
Property Type: Land

M<sup>2</sup> Build size:  
Parking places: by request

Price: 920,000 €  
M<sup>2</sup> Plot Size: 2,000





---

Overview: Exceptional 2,000 m<sup>2</sup> plot in one of the most exclusive areas of Sotogrande, with a buildable area of 500 m<sup>2</sup> and a valid building permit, ready for construction of a luxury villa without any administrative delays. Located in a privileged setting, the property enjoys breathtaking open views of the Mediterranean Sea and the mountains, offering a perfect balance between nature, privacy, and exclusivity. Its excellent location provides easy access in just a few minutes to prestigious golf courses, top-tier international schools, the Sotogrande marina, sports clubs, and a wide range of services and leisure activities. A unique opportunity to develop a high-end residence in one of the most sought-after residential areas in Southern Europe.

---

Features:

Sea views, Mountain views, Private garden, Investment, Resale