

Apartment in La Mairena

Reference: R5412448

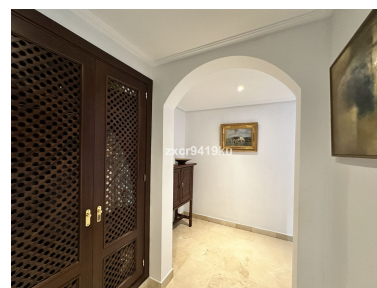


Bedrooms: 2
Status: Sale

Bathrooms: 2
Property Type: Apartment

M² Build size: 171
Parking places: by request

Price: 460,000 €
M² Plot Size: 41





Overview: Stunning South-Facing Garden Apartment in La Mairena. Nestled within the picturesque landscape of La Mairena, this exquisite south-facing garden apartment offers a serene retreat surrounded by natural beauty. With its optimal orientation, you will indulge in abundant sunlight and breathtaking views throughout the day. Residents enjoy complimentary access to the superb El Soto leisure facilities, 9-Hole golf course, gym, spa, sauna, jacuzzi, paddle and tennis court and the wonderful restaurant on site which is a great meeting place for food and drinks. Underground secure parking and 12sqm storage room, This is one of the few south facing properties in the urbanisation, viewing is highly recommended.

Features:

Pool, Air conditioning, Heating, Sea views, Mountain views, Private garden, Lift, None, Alarm system, Parking, None, Resale