

Вилла в Benalmadena Costa

Референция: R5103808



Спальни: 6

Ванные: 7

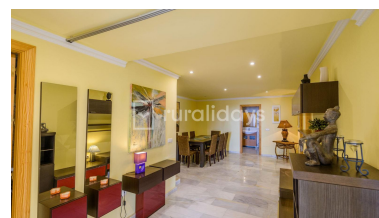
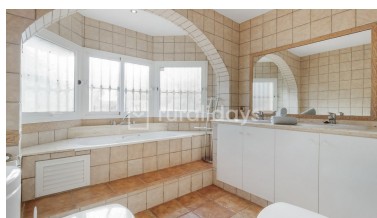
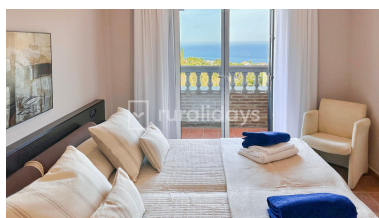
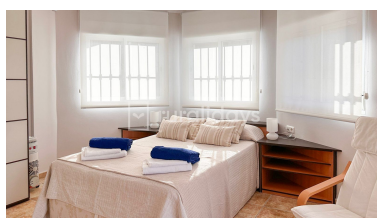
М² Размер: 413

Цена: 1 300 000 €

Статус: Продажа

Тип недвижимости: Вилла Места: по запросу

М² Участок: 800



Описание: Nestled in the hills of Benalmádena, this refined three-level villa offers a unique blend of comfort, space, and spectacular coastal living—perfect for those seeking a serene retreat or a luxurious holiday escape on the Costa del Sol. The main level welcomes you with an expansive and light-filled living and dining area, framed by large windows that open onto views of lush gardens and the Mediterranean Sea. A cozy fireplace and stylish seating invite relaxation, while the fully equipped, separate kitchen caters to culinary enthusiasts. This floor also includes a guest bathroom and a spacious double bedroom with walk-in wardrobe and a private en-suite featuring a Jacuzzi. Upstairs, the master suite boasts a double bed, dressing area, and a luxurious en-suite with Jacuzzi. Two additional bedrooms—one double and one with twin beds—share a modern bathroom with a walk-in shower, ideal for family or guests. The lower level, which also has its own private entrance, features two additional lounges, a compact kitchen, guest WC, a shared bathroom with shower, and two bedrooms—one with a double bed and en-suite Jacuzzi, the other with twin beds. This self-contained space offers excellent flexibility for extended family or visitors. Comfort is ensured year-round with climate control throughout the entire villa. Outdoors, the home truly shines. From the terraces and the private garden, you'll enjoy sweeping views of the sea. The pool area is surrounded by greenery and includes an outdoor shower and an additional bathroom for added convenience. Access to the property is fully paved, ensuring both comfort and privacy in a highly desirable location.

Особенности:

Бассейн, Кондиционирование, Вид на море, None, Частный сад, Система оповещения, Парковочные места